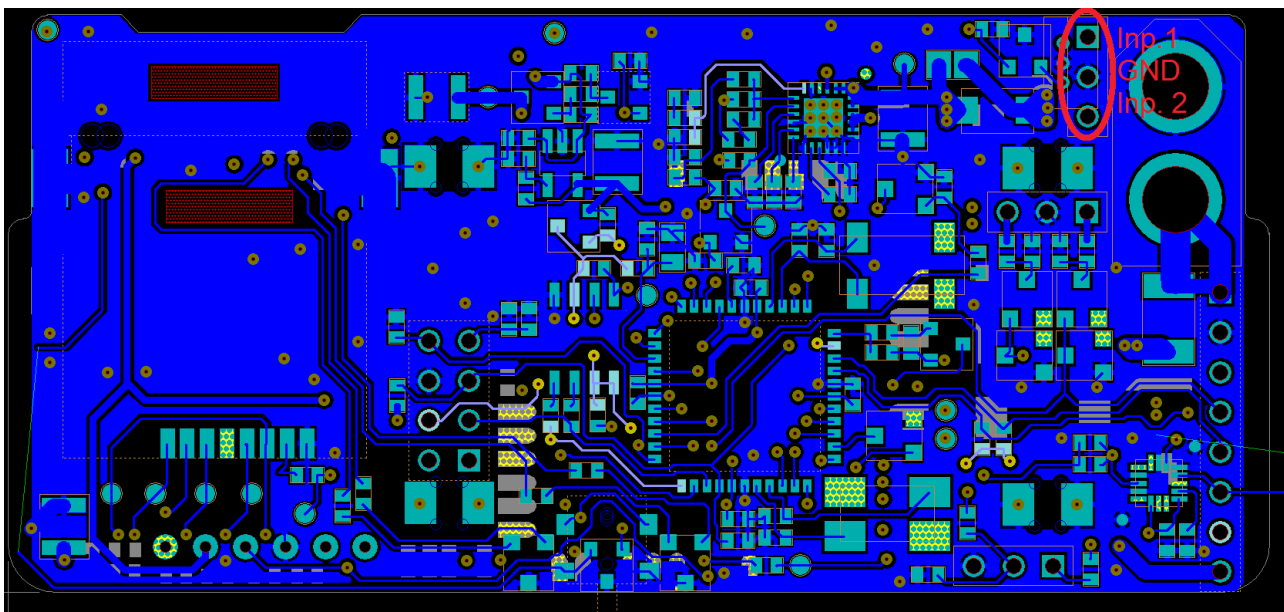




Digital input on a GeoLocker Smart



There are 2 digital inputs available on the GeoLocker Smart which can be used to trigger alarms which will lead to a status change on the website, an email-alarm message and/or an SMS-alarm message.

The configuration is done via the website – settings – external connections. You can choose to have an alarm when the connection to ground is made or when it is broken.

!!! Please be warned never to provide the unit with external power over the input connections.

This input was designed to be used with a switch (e.g. A relais output) to GND.

The connections should be soldered to the PCB (Printed Circuit Board) by the user. Be sure to test the created solution before installation and again after all installation of the system was done.

There is NO prepared solution to have the wires enter the GeoLocker housing. All changes to the housing will directly harm the water resistance.